

**BRIGHTER  
FUTURES  
TODAY**

**2023**

ANNUAL REPORT

THE CATHOLIC SCHOOLS  
FOUNDATION





TABLE OF CONTENTS	
A Word from Leadership	1
Milestones	2
Student Highlights	5
Unlimited Possibilities	7
Annual Dinner	8
A Word from Peter Lynch	11
Financial Statements	13
FY23 Donor Rolls	15
CSF Leadership	27
Ways to Give	28

A WORD FROM LEADERSHIP

**Thank you.**

These two words fall far short of expressing our sincere appreciation for your commitment to changing the lives of at-risk young people. We echo these words with immense gratitude to our donors, the teachers, pastors, administrators, and all involved in making a life-changing education possible for the young people we serve. This vital work is not possible without your generosity, again thank you.

Last year, your generous support provided over 3,500 scholarships to children for whom their education is the first step to a better life. All our students have their own, unique story to tell and, like Jamie, Nelvin, Sophia and Gabriella about whom you will read in this report, a scholarship helped change their lives in a positive way. Your support does more than impact a single year; you positively change the lives and trajectory of these students and help put them on a path towards a brighter future!

**We will not stop until  
no child's future is limited.**

Each scholarship is a story that starts with your generosity and culminates in graduation from high school and success in college and beyond. Last year, 100% of CSF Scholars graduated from high school and 98% matriculated to college. This is a stark contrast to the 21% of low-income students who fail to graduate from high school in Boston, Brockton, and Lowell and the 63% of all MA graduates who go to college following high school graduation. ***The need for our work is greater than ever and your support is more important than ever.*** No student should be left behind.

Peter Lynch is a stalwart supporter of our efforts and for over 33 years he wrote hundreds of letters each year and shared his commitment to our work with thousands of people. Although Peter will be stepping back this year, we know his

commitment to this work is stronger than ever. It was truly an honor to be able to recognize him at our annual dinner in April for his three decades of service, an effort led by his daughters, Annie, Elizabeth, and Mary.

Special fundraising in honor of Peter, and increased general support, resulted in a record-setting year with over \$25 million dollars raised. This is a staggering number, but unfortunately the need is still greater than what we can provide students. ***We will not stop until no child's future is limited by the ability to afford an education and to do so we need your continued assistance.*** The need for your support has never been greater nor has the positive impact of a high-quality Catholic education ever been greater. We hope you will review this report and be inspired to continue to support this vital work. Thank you for all you make possible.

Thank you for all you have done and for your continued support.

**Together, We Change Lives.**



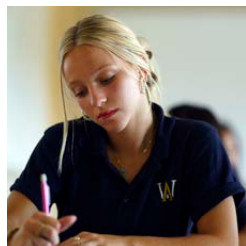
*Michael F. Rogers*

**Michael F. Rogers**  
President, CSF Board of Trustees



*Michael B. Reardon*

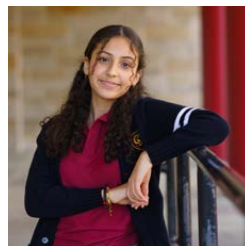
**Michael B. Reardon**  
Executive Director



**EMERGENCY FUND SCHOLARSHIPS FOR UKRAINIAN STUDENTS**

The unprecedented war in Ukraine created refugee families with limited resources. With the support and vision of the Mosakowski Family Foundation, CSF launched an emergency scholarship fund to support Ukrainian children, immediately providing 12 students from Ukraine with near-full tuition scholarships to enroll in

five Catholic schools. Students thrived at their schools because of the incredible support and community that Catholic schools provide. Scholarships will continue to be awarded to these students in the 2023-2024 school year.



**BROCKTON COLLABORATIVE**

CSF is committed to strengthening school sustainability and growth through regional grants and partnerships. In Brockton, CSF's regional grantmaking priority brings together Trinity Catholic Academy and Cardinal Spellman High School to collaboratively create greater access to high-quality Catholic school education for over 800 students in the city of Brockton. Scholarship, enrollment, and student support initiatives have helped ensure thriving school communities with 18% enrollment increase and a 95% retention rate.

and student support initiatives have helped ensure thriving school communities with 18% enrollment increase and a 95% retention rate.



**CITY CONNECTS COUNSELING EXPANSION**

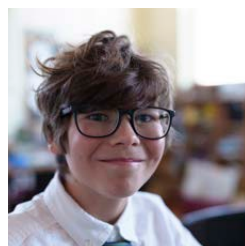
CSF's City Connects takes a systemic, high-impact, cost-effective approach to addressing the out-of-school factors that limit learning. Through a partnership that has spanned 15 years, City Connects has been "on the ground" in Boston Catholic schools since 2008. During the 2022-23 school year, the practice was implemented in 16 schools

across the Archdiocese of Boston, serving students and families from pre-kindergarten through grade 9. Over 28,000 services and enrichments were delivered to students in Boston Catholic schools, with the help of more than 170 community partners. The Catholic Schools Foundation continues to expand its support of City Connect in Catholic Schools every year with three new schools added in FY23: Cheverus Catholic School, Malden, Saint Bridget School, Framingham and Saint Theresa School, Somerville.



**LAWRENCE PILOT INITIATIVE**

CSF launched an innovative scholarship program to ensure graduates of Lawrence Catholic Academy, located in one of the Commonwealth's poorest cities, have access to a high-quality, college preparatory Catholic education. CSF provided \$100K in additional scholarships which doubled the number of students from LCA who can now attend Central Catholic High School. This support removed the financial barrier for extremely low-income families.



**GO SCHOLARS**

Starting four years ago, CSF's Guaranteeing Opportunities (GO) Scholarship allows outstanding young men and women at CSF's Sponsored elementary schools to attend their Catholic high school of choice with meaningful, guaranteed high school scholarships and mentorship from CSF supporters. There are now 50 students in the program at 14 high schools. The first class of graduating GO Scholars in 2023 will attend schools such as Columbia, Boston College, and Northeastern!



**\$14.4M**  
ALLOCATED IN SCHOLARSHIPS AND  
NON-SCHOLARSHIP SUPPORT

**79**  
CSF-SUPPORTED CATHOLIC  
SCHOOLS

**3,500**  
STUDENTS PROVIDED WITH  
SCHOLARSHIP SUPPORT



**77%**  
OF STUDENTS SERVED  
ARE NON-WHITE

**68%**  
OF STUDENTS COME FROM  
SINGLE-PARENT HOMES

**\$48,950**  
MEDIAN TOTAL FAMILY INCOME  
FOR A FAMILY OF FOUR

STUDENT HIGHLIGHTS



**NELVIN**  
*2023 Dinner Student Speaker*

Nelvin De La Rosa delivered an emotional speech at CSF's Building Minds Scholarship Fund Celebration on April 27, 2023. As a CSF Scholar, Nelvin shared his remarkable story of overcoming adversity and achieving academic success thanks to the support he received from the supporters of CSF. Nelvin shared that he was born in Lawrence to immigrant parents from the Dominican Republic. When he was 10 years old, both of his parents tragically passed away, leaving him in a difficult situation. But through the grace of God, his four older sisters stepped up to protect and love him, encouraging him to pursue a better future through education. Despite his worry about the cost of a Catholic high school, Nelvin received a scholarship through the Building Minds Scholarship Fund. This scholarship made his dream of attending Central Catholic High School in Lawrence, MA a reality. Nelvin is currently attending the University of Massachusetts, Lowell where he is studying engineering.



**SOPHIA**  
*CSF Alumna and Author*

Sophia Oceana-Desmornes, a CSF Scholar alumna and 2003 graduate of St. Catherine's (now St. Theresa's) in Somerville and a 2007 graduate of Mount Saint Joseph Academy, spoke at the 33rd Building Minds Scholarship Fund Celebration about the impact Catholic school made on her life. She recently self-published her own children's book, *I Know Who I Am*, which aims to boost self-esteem and provide encouragement for readers. A graduate of both Emmanuel College and Regis College, Sophia currently serves as an RN Supervisor at Commonwealth Care Alliance.



**JAIME**  
*Inspiration Scholar*

Jaime first came to Saint John Paul II Catholic Academy when he was in 2nd grade and his family was unhoused. Receiving a scholarship from CSF for seven years, Jaime is now on his way to Boston College High School with an Inspiration Scholarship from CSF. Jaime's teacher says, "Jaime is very hardworking, diligent and conscientious. He understands the importance of maintaining good grades. He is a model leader among his peers. He is always polite and respectful. Jaime is empathetic and caring about his family, friends and school community. He can always be counted on to help out." Congratulations Jaime and good luck in high school!



**GABRIELLA**  
*Emergency Fund recipient*

Gabriella attends Immaculate Conception School and loves her school community. Unfortunately, her father experienced a mental health crisis in 2023 resulting in violence and family upheaval. The family was unable to count on the father's income and Gabriella's mom needed help with tuition payments to keep her daughter safe and supported in her Catholic school. CSF's Emergency Fund ensured that Gabriella received the resources she needed to stay at her school where she had the care and love she needed to make it through a difficult time in her life.

*\*Some names and photos may have been changed to protect students' privacy*

UNLIMITED POSSIBILITIES

# CHANGE STARTS WITH EDUCATION

100%  
GRADUATION AMONG  
CSF SCHOLARS

98%  
COLLEGE  
MATRICULATION RATE

122  
CSF SENIOR SCHOLARS  
HEADED TO COLLEGE



CSF Scholars are college bound and we are proud of the success that our students have achieved.

FULL LIST AVAILABLE ON OUR WEBSITE

**Dear Friends,**

April 27th was a very special night for our family, especially our father, Peter Lynch.

At the 33rd Annual Building Minds Scholarship Fund Celebration, CSF honored “Grandpa” (as we call him) for his more than 30 years of helping in-need students obtain a high-quality Catholic education.

That evening, we were surrounded by family, friends and so many other supporters who came together to celebrate and honor our father’s decades of leadership and service to the Building Minds Scholarship Fund (formerly Inner-City Scholarship Fund). Peter’s role as Chief Emeritus has been one of the greatest joys of his life and has positively changed the trajectory of thousands of children’s lives.

**That night, Peter asked everyone in the room to raise their hand and promise to continue to support the mission of the CSF. Almost every hand in that room went up.**

Simply put, the evening was electric. In a bright and fun atmosphere, students gathered to share their talents and achievements with guests during a buzzing reception filled with CSF’s most generous and loyal supporters. To kick off the evening, Rick Spillane, Trustee of the Lynch Foundation, was awarded the Carolyn and Peter Lynch Award for his tremendous fundraising efforts leading to the evening’s record-breaking success.

When the dinner program started, we heard stories from long-time supporters and close friends of Peter; Natalie Jacobson, Ron O’Hanley, John Fish, and Robert Kraft. Through their words, thousands of people came to know the man who was being honored that evening — a proud father and grandpa, a doting husband, and a true champion of Catholic education.

The student and alumni speakers were an inspiration to everyone. We heard from Fortune Kalala, a Central Catholic High Alum, Sophia Occena Desmornes, a Saint Catherine of Genoa School & Mount Saint Joseph Academy Alumna, and the student star of the evening: Nelvin De La Rosa, a senior (at the time), from Central Catholic High School.

Nelvin lost both his parents at an early age and his future looked uncertain. However, he persevered, crediting his sisters and his Catholic education for his success. That night Nelvin proudly informed the audience that he would be attending the University of Massachusetts at Lowell and the crowd cheered — but no one cheered louder than Grandpa.

Two more highlights of the night included the presentation of Peter Lynch Day by Cardinal Sean O’Malley and students at Mission Grammar and Cathedral High School. Each year, on May 11th (Peter and Carolyn’s wedding anniversary), students across the Archdiocese of Boston will celebrate by doing acts of service for their school and community. Second, the amazing video thanks to Bob Reynolds and the team at Putnam showcasing Lawrence Catholic Academy. It is safe to say no one in the room will forget the young man, Nasir, and his love for snack time!

With a 100% high school graduation rate and a 98% college matriculation rate, thousands of students’ lives have been changed because of you. This is why Peter has dedicated his time to make thousands upon thousands, of calls, letters, and in-person meetings for the past 33 years.

Together we raised in our father’s words an astounding \$21M for scholarships — the most ever raised in CSF’s history. This includes over \$13M towards the Lynch Scholarship Endowment Fund which will have a tremendous impact allowing more children the opportunity to receive a high-quality education.

We are so grateful to everyone who came out to celebrate with us. That night, Peter asked everyone in the room to raise their hand and promise to continue to support the mission of the CSF. Almost every hand in that room went up. It is his sincere hope that you will continue to give each and every year as he takes a step back from this work to spend more time with our family and his ten grandchildren. And if you know him you know he will hold you to your promise!

My sisters and I were galvanized over the past year by connecting with such generous loyal supporters. Thank you for your continued dedication to these students’ education.

**Annie Lynch Lukowski**  
**Elizabeth Lynch de-Montrichard**  
**Mary Lynch Witkowski**  
*2023 Building Minds Scholarship Fund Co-Chairs*



**SAVE THE DATE**

**34<sup>th</sup> Annual Building Minds Scholarship Fund Gala**

**THURSDAY, APRIL 11, 2024**

Boston Marriott Copley Place  
 Honoring Richard Henken, Schochet Companies  
 2024 Dinner Celebration Co-Chairs:  
 Renee and Michael Minogue



2023 Carolyn and Peter Lynch award recipient, Rick Spillane with Peter Lynch

## A WORD FROM PETER LYNCH

### Dear Friends,

As many of you know, I made the decision last year to begin to step back from my full-time involvement in the daily work of raising funds for the Building Minds Scholarship Fund. When I began full-time begging for scholarships it was 33 years ago, and our three daughters were living at home. Today our three daughters are in three different cities, and we have the wonderful blessing of ten fantastic grandchildren. The major reason I am stepping back is to be able to spend more time in the role I cherish most, that of dad and grandpa.

Be assured, I will always remain involved in this critical effort because it is so important and profoundly changes lives and MUST continue (Eliminating aid is devastating for these families who are struggling to pay rent and make ends meet each month. Stopping a scholarship most likely means that students would be forced to exit our great schools – we can't let that happen!) I am reducing my level of involvement, but thanks to your historic generosity last year and over numerous years, I have confidence that this vital financial support will continue for decades to come. Thank you so much!

**Our scholarship recipients are mostly non-white (approx. 80%), are from single-parent families (68%), and a meaningful percent do not speak English at home.**

My father died when I was very young, I grew up in a single-parent family and my life was very positively impacted by a partial scholarship, I can tell you first-hand, your gift is making a profound difference! Your kindness gives at-risk children the opportunity for a superior education, in a comforting environment where they also learn to be a caring person. Our scholarship recipients are mostly non-white (approx. 80%), are from single-parent families (68%), and a meaningful percent do not speak English at home. Historically, the success profile for such a child in the greater Boston public schools is not good (more than one in five low-come

students will not graduate from high school in Boston Public Schools). However, with the ability to attend our schools, these children will be able to break the cycle of poverty and become happy, productive citizens and parents.

As I take a step back from the daily grind of hundreds and hundreds of phone calls and letters, I remain confident in CSF's unique positive impact on so many students, families, and communities. Over the last thirty years our family has given to and will continue to support several dozen highly effective organizations assisting young people. Yet, I still have not found one of these groups that is even close to the level of the Catholic Schools Foundation in positively changing outcomes of economically disadvantaged children.

As you read this report, know that your giving has made a difference and that your assistance is incredibly impactful and so appreciated. We need to continue to assist these wonderful children who have benefited from your generosity. These families have not had great luck in their lives in financial terms and therefore these scholarships are both very meaningful and uplifting. If our funding declines, it is crushing. These kids love our schools, and we continue to need your help to allow them to continue to flourish.

Although you will be hearing less from me this year and in the coming years, know that you have my extraordinary appreciation for your kindness, and I am as committed as ever to this program and hope you will continue your loving support of this work just as I will do.

Thank you for being there every year for these amazing children. Together, **WE CHANGE LIVES!**

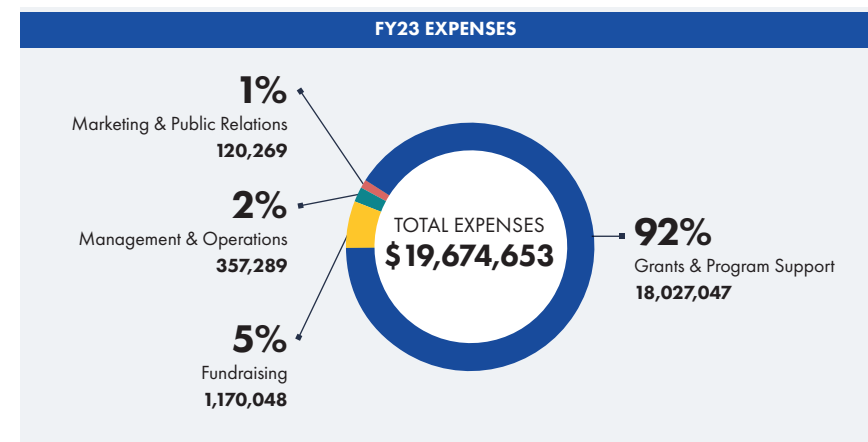
Sincerely,

**Peter S. Lynch**  
Chairman, Building Minds Scholarship Fund  
President Emeritus, Catholic Schools Foundation



FY23 FINANCIAL STATEMENTS (Unaudited)

	CURRENT YEAR TO DATE		
	June 30, 2023	June 30, 2022	\$ Change
<b>ASSETS</b>			
Cash & cash equivalents	3,302,013	2,530,837	771,176
Investments, at market value	120,614,931	103,965,646	16,649,285
Accounts & Contributions Receivable, net	840,539	585,539	255,000
Interest in net assets of the Catholic Foundation	2,902,135	3,023,740	(121,605)
Prepaid Expenses & Deposits	56,265	51,504	4,761
Fixed Assets, net	26,464	13,975	12,489
<b>TOTAL ASSETS</b>	<b>127,742,346</b>	<b>110,171,241</b>	<b>17,571,105</b>
<b>LIABILITIES &amp; NET ASSETS</b>			
<b>Liabilities</b>			
Accounts payable & accrued expenses	88,986	136,265	(47,279)
Contingent Gifts	-	-	-
Total Grants Payable	16,064,159	14,010,603	2,053,556
Total Liabilities	16,153,145	14,146,868	2,006,277
<b>Net Assets</b>			
Without Donor Restrictions:			
Operating	38,954,641	36,708,415	2,246,226
Board Designated (CCF)	998,569	998,569	-
With Donor Restrictions:			
Purpose, time & accum. apprec. -	13,817,514	11,277,401	2,540,113
Perpetually restricted endowment	57,818,475	47,039,988	10,778,487
Total Net Assets	111,589,200	96,024,373	15,564,827
<b>TOTAL LIABILITIES &amp; NET ASSETS</b>	<b>127,742,344</b>	<b>110,171,241</b>	<b>17,571,103</b>



	CURRENT YEAR TO DATE		
	FY 23 - Period Ended 06/30/2023 (not audited)		
	Without Donor Restrictions	With Donor Restrictions	Total
<b>REVENUES, GAINS AND OTHER SUPPORT</b>			
Contributions and Pledges (net)	13,549,324	625,000	14,174,324
* Investment return designated for operations	2,848,593	-	2,848,593
Distribution of funds - interest in related party	-	-	-
Interest	87,698	-	87,698
** Net assets released from time and purpose restrictions	641,748	(641,748)	-
<b>TOTAL OPERATING REVENUES</b>	<b>17,127,363</b>	<b>(16,748)</b>	<b>17,110,615</b>
<b>EXPENSES</b>			
<b>Programs</b>			
Grants (educational support)	14,158,285	-	14,158,285
Special projects (all non-educ. support)	3,257,644	-	3,257,644
Program overhead	611,117	-	611,117
<b>Supporting services</b>			
Management and operations	357,289	-	357,289
Fundraising event (Dinner)	534,015	-	534,015
Total Other Development	636,033	-	636,033
Marketing and public relations	120,269	-	120,269
<b>TOTAL EXPENSES</b>	<b>19,674,653</b>	<b>-</b>	<b>19,674,653</b>
<b>*** CHANGE IN NET ASSETS</b>	<b>(2,547,290)</b>	<b>(16,748)</b>	<b>(2,564,038)</b>
<b>OTHER REVENUES</b>			
**** Endowment Contributions	-	10,778,487	10,778,487
Change in discount on contributions receivable	-	-	-
Net change in value of interest in related party	-	-	-
Distribution of funds - interest in related party	-	-	-
Investment return designated for operations	-	(2,848,593)	(2,848,593)
***** Investment Income, net	4,793,516	5,405,454	10,198,970
<b>TOTAL OTHER REVENUES</b>	<b>4,793,516</b>	<b>13,335,348</b>	<b>18,128,864</b>
<b>TOTAL INCREASE (DECREASE) IN NET ASSETS</b>	<b>2,246,226</b>	<b>13,318,600</b>	<b>15,564,827</b>
<b>NET ASSETS AT BEGINNING OF YEAR</b>	<b>37,706,984</b>	<b>58,317,389</b>	<b>96,024,373</b>
<b>NET ASSETS AT END OF PERIOD</b>	<b>39,953,210</b>	<b>71,635,989</b>	<b>111,589,200</b>



**\$150,000+**

Anonymous (5)  
 Bank of America Charitable Foundation  
 Mr. William Bower  
 Walter and June Downey  
 Mr. and Mrs. Paul B. Edgerley  
 Mr. and Mrs. John F. Fish; Suffolk Construction Company, Inc.  
 The Flatley Foundation  
 Mr. and Mrs. Robert T. Hale  
 Hunt Street Fund  
 The Klarman Family Foundation  
 Robert and Dana Kraft  
 Liberty Mutual Insurance  
 Lynch Family and The Lynch Foundation  
 Renee & Mike Minogue  
 The Mooney Family  
 Mr. and Mrs. William S. Mosakowski  
 Ronald O’Hanley  
 Ms. Meg Reynolds and Mr. William McKee, Jr.  
 Mr. and Mrs. Patrick E. Roche, Jr.  
 Janet and Mike Rogers  
 Richard and Joanne Spillane  
 Mr. Jeffrey Vinik  
 Jim and Margaret Wade  
 Mr. Steve Wymer  
 Yawkey Foundation

**\$100,000-\$149,999**

Anonymous (3)  
 Michelle and Bob Atchinson  
 Friends at Bain & The Bain Children’s Charity  
 Eastern Salt Company  
 Emmanuel College  
 Ann and Graham Gund  
 Highland Street Foundation  
 Barbara and Amos Hostetter

The Howley Foundation  
 Roger P. Joseph, Esq. and Patricia Palmer Joseph  
 Gary and Diane R. Kaneb  
 The Kelly Family Foundation  
 Mr. Leonard Lauder  
 Mark, Becky, Samantha Levin  
 Mr. and Mrs. Stephen J. Lockwood  
 Mrs. Annie Lynch Lukowski and Mr. Scott Lukowski  
 Ms. Elizabeth Lynch de Montrichard and Mr. Gonzague de Montrichard  
 Mr. and Mrs. Martin J. Mannion  
 Mr. and Mrs. James G. Miller  
 Paul and Sandra Montrone  
 Morgan Lewis and Friends  
 Mr. William Foley  
 Mr. and Mrs. Stephen G. Pagliuca  
 Altum Fund/ Mr. James N. Perry Jr. and Mrs. Mary D. Perry  
 Putnam Investments and Friends  
 Mr. and Mrs. John J. Remondi  
 Mr. and Mrs. Robert L. Reynolds  
 Eileen C. Shapiro and Ben E. Eaves°  
 Richard and Susan Smith Family Foundation - Trustees: Richard and Susan Smith; John, Amy S., James and Elizabeth Berylson; Robert and Dana Smith; Debra S., Jessica and Andrew Knez  
 Mrs. Thea Stoneman  
 Brendan and Kerry Swords  
 The John and Mary Corcoran Family Foundation  
 The TJX Companies, Inc.  
 Charlotte and Herbert Wagner  
 Mr. and Mrs. Robert D. Walter  
 WCVB, Channel 5 Boston  
 Joe and Cindy Wickwire  
 Dr. Mary Lynch Witkowski  
 Stephen G. Woodsum and Anne R. Lovett



**\$50,000-\$99,999**

Anonymous (2)  
 Mr. and Mrs. Joshua Bekenstein  
 Mr. and Mrs. Douglas A. Berthiaume  
 Mr. and Mrs. William J. Bolt  
 Mr. David J. Breazzano  
 Brown Brothers Harriman & Co.  
 The Carney Family Charitable Foundation  
 Cashin Family Fund  
 Mr. Scott A. Chapman  
 Paul and Margaret Chisholm  
 Steve and Patti DuFour  
 Thomas and Mariana Duncan  
 Lena G. and Ronald P. Goldberg, M.D  
 Gabrielle & Richard J. Henken & The Schochet Companies  
 Bruce and Patricia Herring  
 Janet & Ken Himmel and Grill 23  
 Brian and Mary Jo Hogan  
 Ms. Cathy James Paglia  
 The Holly and Bruce Johnstone Charitable Gift Fund

Mary & Jim Judge  
 Kevin & Mary Ellen Kelley°  
 Howard and Michele Kessler  
 Ronald E. Logue and Kathleen M. McGillicuddy  
 Mabel Louise Riley Foundation  
 Carl J. Martignetti  
 Mr. and Dr. Brendan McCarthy  
 J. Brian and Nancy McCarthy - Kelly’s Roast Beef Inc.  
 Mr. John McDowell  
 Neal and Lynne Miller  
 Mr. Brian Moynihan and Ms. Sue Berry  
 Mr. and Mrs. John V. Murphy  
 George McCabe/Portolan Capital Management  
 Mr. & Mrs. Christopher C. Remondi  
 Mrs. Barbara Roche  
 Mr. and Mrs. Raffaele Santoro  
 The John J. and Mary E. Shaughnessy Charitable Trust  
 State Street Corporation  
 Mr. and Mrs. Daniel J. Sullivan, Jr.  
 Teradyne, Inc.  
 The Sidney A. Swensrud Foundation  
 Joel C. Tillinghast  
 Kristine Trustey & Sean McGraw  
 Joseph M. Tucci  
 Rose-Marie and Eijk van Otterloo  
 Patrick and Emily Venanzi

**\$25,000-\$49,999**

AFLAC Incorporated  
 Mr. and Mrs. Thomas J. Allen  
 Samuel and Nancy Altschuler  
 Analog Devices, Incorporated  
 Anonymous (3)  
 Ashurst Foundation  
 Arcturus Therapeutics  
 Mr. and Mrs. Robert C. Bertelson

BlackRock Financial Management, Inc.  
 Bloomberg Philanthropies  
 Geoff & Rene Boisi / Leadership Roundtable  
 Boston College  
 The Boston Foundation  
 Mr. and Mrs. Edward P. Bousa  
 Mr. Gregory C. Bradley  
 Mr. and Mrs. John Brennan  
 Donald and Campbell Burton  
 Cammarata Family Foundation  
 The Campaign for Catholic Schools  
 Ms. Tracy A. Campion and Mr. Bernard E. Greene, Jr.  
 Mr. John H. Carlson  
 The Cedar Street Foundation  
 Mr. and Mrs. Miceal G. Chamberlain, Jr.  
 John and Stephanie Connaughton  
 Richard and Ann Marie Connolly  
 Mr. and Mrs. Jack M. Connors, Jr.  
 Tom Corra and Dara Concagh  
 Howard Cox  
 David and Victoria Croll  
 Mr. and Mrs. Paul D’Attanasio

Mia & Scott Gieselman  
 Mr. and Mrs. James Green  
 Mr. and Mrs. Bart A. Grenier  
 Mr. and Mrs. Thomas M. Hagerty  
 John W. Henry Family Foundation  
 The High Pointe Foundation  
 Brennan & Colin Howley  
 Mr. and Mrs. Gerald R. Jordan  
 Nancy & Rick Kelleher & the Kelleher Family  
 Mr. and Mrs. Daniel E. Kelley  
 Loomis Sayles & Company, L.P. and Friends  
 Mr. Caleb Loring, III  
 Marchon Partners  
 Mr. Gerard McGraw  
 Cathy Minehan & Jerry Corrigan  
 Mr. Vince Montemaggiore  
 Heather & Robert Morrissey  
 Ms. Kathleen Murphy  
 Mr. and Mrs. Robert T. Noonan  
 Mr. and Mrs. Robert A. O’Neill  
 Gillian and Stephen Petersen  
 Mr. and Mrs. R. Robert Popeo, Esq.  
 PricewaterhouseCoopers LLP

**“I believe my future is bright today because I can attend a good Catholic school that will set me up for a college.”** – WILLIAM S. ’25

DePrisco Diamond Jewelers & Co.’s, Inc.  
 Mr. Daniel diBartolomeo/Northfield Information Services  
 Jim and Bev Donovan  
 Mr. and Mrs. David Doyno  
 Eastern Bank Charitable Foundation  
 Mr. Thomas Faust  
 Mr. and Mrs. Thomas J. Folliard  
 Gerondelis Foundation, Inc.  
 Nancy and Craig Gibson

Mr. and Mrs. Lawrence Rakers  
 The Reiser McStay Family Foundation  
 Jack and Judi Remondi  
 Robertson Foundation  
 Mr. and Mrs. Vincent Roche  
 The William E. and Bertha E. Schrafft Charitable Trust  
 Roger and Kristin Servison  
 Mr. Eric Slika  
 Mr. Brian Spector

Stephanie H. and David A. Spina Family Foundation  
 Mr. and Mrs. Jonathan M. Uhrig Vertex  
 White Winston Select Asset Funds

**\$10,000-\$24,999**

Anonymous°  
 Anonymous (5)  
 Mr. and Mrs. Paul L. Antico  
 Mr. Timothy J. Barberich and Ms. Eileen P. Gebrian  
 Mr. Steve Barwikowski  
 Mr. Rick Berk  
 Mr. and Mrs. Jeffrey Bilezikian  
 Birmingham Foundation  
 Norm and Helen Boucher  
 Mr. and Mrs. Michael Bradley  
 Dawn and Gary Burkhead  
 Mr. Randall Byrnes  
 David and Kathleen Calabro  
 Kevin and Julie Callaghan  
 Katherine Chapman Stemberg and Bill Schnoor  
 Ellyn Charters Zarracina and Matt Zarracina  
 Paul and Mary Ciampa  
 Jim Cleary & Jessica Hopfield  
 Charles and Gloria Clough  
 Mr. Timothy Cohen  
 Mr. and Mrs. Steve Conine  
 Margot C. Connell and Family  
 Mr. Anthony Consigli  
 Mr. Todd C. Cozzens  
 Robert Cunjak and Susan Dunn  
 Mr. and Mrs. Gerald R. Curtis  
 Jim and Shirley Curvey  
 Mr. and Mrs. William Andrew Danoff  
 Deloitte & Touche USA LLP and Friends  
 Demoulas Foundation  
 Midge and Tom DeSimone  
 Tim and Debb Diggins  
 Mr. and Mrs. David W. Donahue  
 Mr. and Mrs. Douglas A. Donahue, Jr.  
 Sarah and Walter Donovan

John and Kathleen Drew  
 Arthur X. and Kathy Duffy  
 William Ebsworth and Anandi Pratap  
 Mr. and Mrs. William P. Egan  
 Frederick E. Ehram  
 Mr. and Mrs. Michael Evanisko  
 Greg & Katie Everett  
 Mr. Jeffrey S. Feingold  
 Kate and Carmen Ferrara



Fidelity Investments  
 Mr. and Mrs. George Fischer  
 Gabelli Group Capital Partners  
 Mr. and Mrs. Brian J. Gallagher  
 Goldman Sachs and Friends  
 Mr. and Mrs. Lawrence D. Greenberg  
 Mr. Robert E. Griffin, Jr.  
 Brian and Armanda Hanson  
 Mr. William J. Hayes  
 Mr. Ernie L. Herrman  
 Timothy T. Hilton, Esq.  
 Ted Hoff and Kathleen O’Connell  
 The Hooley Family  
 Mr. and Mrs. Robert G. Ix  
 Sean and Carson Judge  
 Ed and Ann Kania



Mr. and Mrs. Rajiv Kaul  
 Mr. and Mrs. Stephen Knightly  
 Mr. and Mrs. Jeff Lagarce  
 Mr. Matt Levin  
 Mr. Gary Loveman  
 Linda H. Lynch and Kevin P. Johnson  
 Joe and Liz Marconi  
 Paul and Peg Marrkand  
 Mr. and Mrs. Mike Massaro  
 Mr. Kevin Matthews  
 Mr. and Mrs. Thomas J. May  
 Tim McBride, Bessemer Trust  
 Mr. Michael McDonald  
 Mr. and Mrs. John Morrissey  
 Mr. and Mrs. Stephen C. Neff  
 Oberndorf Enterprises  
 Old Neighborhood Foods  
 Kevin and KC O’Leary  
 Ms. Karen O’Toole  
 Victor and Jennifer Paci  
 Mr. William Paine  
 Mr. Donald Perault  
 Mr. and Mrs. Frank Previte  
 Prince Lobel Tye LLP  
 Mr. and Mrs. John J. Regan  
 Mr. and Mrs. Kennedy P. Richardson

Bob & Carol Riley  
 Mr. and Mrs. John Roth  
 Mr. and Mrs. Raymond B. Ruddy  
 Thomas F. and Katherine E. Ryan  
 Saint Cecilia Parish, Boston  
 Mr. and Mrs. Maurice Samuels  
 Paul and Mary Beth Sandman  
 Elise Schaefer  
 David and Marie Louise Scudder  
 Mr. and Mrs. Niraj Shah  
 Mr. and Mrs. Brad Singer  
 Mr. and Mrs. Thomas M. Sprague  
 Dr. Jay A. Stein and Mrs. Gretchen Fox Stein  
 Abbot and Dorothy H. Stevens Foundation  
 Paul and Ulla Sullivan  
 Mr. and Mrs. Michael Sutphin  
 Dr. and Mrs. Ralph Sweetland  
 Mr. Mason Tenaglia  
 Mr. and Mrs. William J. Teuber  
 The American Ireland Fund  
 The Cleary Family Foundation  
 The Murray Family Charitable Foundation  
 Tom and Karen Tierney  
 Mr. Nick Tiller  
 Ted and Kathy Truscott  
 Matt and Susan Weatherbie  
 Frank Wisneski and Lynn Dale

---

**\$5,000-\$9,999**

Mr. and Mrs. Colin Anderson  
 Anonymous (3)  
 Mr. and Mrs. John G. Balboni  
 Tchintcia and John Barros  
 Mr. and Mrs. Andrew Blanchard  
 Boston Scientific Corporation  
 Mark Kerwin and Annemarie Lewis-Kerwin  
 Christine & John Komola  
 Ms. Eirene Kontopoulos  
 Ms. Barbara N. Breck  
 Mr. Dennis Burns  
 Canaccord Genuity Inc. and Friends  
 The Catholic Community Fund

Catholic Schools Foundation, Inc.  
 Pamela Dippel Choney and Jeffrey A. Choney  
 Mr. Leo J. Corcoran  
 David and Janet Coyle  
 Mr. and Mrs. Ralph Dangelmaier  
 Mr. and Mrs. Joseph DeSantis  
 R. J. Devereaux Corp.  
 Mr. and Mrs. Anthony DiNovi  
 John & Patricia Hunt Dirlam  
 Frank and Donna Doyle  
 Mr. and Mrs. C. Herbert Emilson  
 Beth and John Fantozzi  
 Aubert J. Fay Charitable Fund  
 RoseMary and Dan Fuss  
 William and Penelope Gallagher  
 Mike and Terri Gilroy  
 Mr. John J. Grimes

Rosemary and Jack MacKinnon  
 Mr. and Mrs. John J. Mahoney  
 Anne and Paul Marcus  
 Massachusetts Port Authority  
 MA State Council Knights of Columbus  
 McCabe Family Foundation  
 McCall & Almy, Inc.  
 Andy and Linda McLane  
 Michael E. Mooney, Esq.  
 Noreen and Martin Millane  
 Mr. and Mrs. Charles Morrison  
 Garrett Nagle & Co., Inc.  
 Mr. and Mrs. John O’Brien  
 Mr. and Mrs. Joseph O’Donnell  
 Palisade Capital Management, L.L.C.  
 Mr. Jarrod Pelletier  
 Mr. David Phelan

---

**“I believe that my future is bright today because of my confidence, perseverance, and determination to become my best self.”**

— HILARY M. ’27

Ian Gutterman  
 Mr. and Mrs. James M. Harmon  
 Mr. Thomas C. Hense and Ms. Sharon L. Stade  
 Ms. Pam Holding  
 Mr. and Mrs. Ronald W. Hovsepian  
 Ms. Sarah J. Jankowski  
 Mr. James Keleher and Ms. Nancy Gittelson  
 Mark Kerwin and Annemarie Lewis-Kerwin  
 Christine & John Komola  
 Ms. Eirene Kontopoulos  
 Ms. Jennifer Kordell and Mr. Tim Moran  
 Mr. & Mrs. James A. Lack  
 Thomas and Margaret Lanahan

Marc A. Reardon  
 Peg and Mike Reardon  
 Ms. Melissa Reilly  
 Mr. and Mrs. Steven Richardson  
 Mr. and Mrs. Matthew Rogers  
 Mr. and Mrs. Michael Rossi  
 Lewis and Ali Sanders  
 Mr. and Mrs. Scott Savitz  
 Peter and Maria Smail  
 Mr. and Mrs. Pierre Sorel  
 Nick Thakore  
 The Barbara and Patrick Roche Center for Catholic Education-Boston College  
 The William E. Simon Foundation

Mr. Michael Tooke  
 Mr. Timothy Tully  
 Josef H. von Rickenbach  
 Mr. and Mrs. Bill Winterer

---

**\$2,500-\$4,999**

Mr. Christopher Allen  
 Anonymous (8)  
 Assumption University  
 ATS Equipment  
 Dr. and Mrs. Matthew A. Barish  
 Roberto M. and Jennifer Braceras, Esq.  
 Mr. John Skidmore Brown  
 Mr. Steven Browne  
 Ronald and Ronni Casty  
 Michael and Melanie Cataldo  
 Charity Clients of the Giving Block  
 Mr. Ryan Connolly  
 Anthony and Christie de Nicola Foundation  
 FACTS Management Company  
 Fish Family Foundation  
 Mr. and Mrs. Arthur J. Greenwood  
 Cathy and Fred Grein  
 Mr. and Mrs. James Griffin  
 Corinne & Kyle Grimes  
 Mr. Lionel Harris  
 Kevin P. Harron and Kimberlee A. Brown  
 James and Carolyn Holmes  
 Joseph and Margaret Hunt  
 Mr. Richard P. Junghans  
 Cynthia Keefe, Robert Keefe  
 John and Maureen King  
 Kirkland & Ellis LLP  
 Paul and Amy Kraft  
 Mr. and Mrs. Anthony Lucki  
 Mr. Andrew Mathison  
 Ms. Kathryn McDonough  
 Maryanne Spillane McInturf  
 Dr. Barbara J. McNeil  
 Mr. and Mrs. Edmund F. Murphy III

Mr. William J. Murphy  
 Catherine and Barry Nearhos  
 Mr. and Mrs. Ramzi Nuwayhid  
 Mr. and Mrs. Brian O’Connor  
 Jack and Terry O’Connor  
 Mr. Scott O’Reilly  
 Parker Family  
 Robert H. Quigley, Jr.  
 Mr. Michael Schelzi  
 The Shields Family & Shields Health Care Group  
 South Boston Catholic Academy, South Boston  
 Stonehill College  
 Lisa Tate Fund at the Community Foundation of Western Massachusetts  
 Tracey Taylor  
 Jeanne Tringali and Tom Bialaski  
 Ms. Kristina Valente  
 Jane K. Williamson  
 Peter and Susan Zotto

---

**\$1,000-\$2,499**

AAFPCAs  
 Ms. Megan Adzima  
 Mr. and Mrs. Christopher R. Anderson  
 Mr. Rob Ankner  
 Anonymous (11)  
 Mr. and Ms. Richard Armour  
 David H. Badeau  
 Michael J. and Ann M. Bevilacqua  
 Mr. and Mrs. Christian Bodner  
 Mr. Edward Bond, Jr.  
 Ms. Jaelyn Childs  
 Natalie B. Choate, Esq.  
 Mr. and Mrs. Albert T. Comeau  
 Andrea J. Corcoran  
 Michael F. and Marian Cronin  
 Mr. and Mrs. John J. Cullinane, Jr.  
 John and Janet H. Damaske  
 Ms. Jen Daniels  
 Julie DiFilippo

Mr. and Mrs. James S. DiStasio  
 Mr. and Mrs. Mark C. Dmohowski  
 Mrs. Elizabeth M. Dodge  
 Ms. Kelley Doyle  
 Mr. John J. Driscoll  
 Mr. and Mrs. George Duncan  
 Daniel and Anne Dwyer  
 Susan and Jeffrey Esper  
 Mr. Martin Fantozzi



Mr. and Mrs. Colin Fenton  
 Mr. and Mrs. Bill Fine  
 Daniel L. Fitzgerald  
 Mr. and Mrs. Joseph Flaherty  
 Fontbonne Academy, Milton  
 Mr. Bill Gehan  
 Rita and Kevin Gill  
 Richard B. Gold and Corrine M. Barrett  
 Dr. Norman C. Gaudrault  
 Phil and Peggy Haughey  
 Mr. and Mrs. Thomas J. Hennessey  
 John and Mary-Beth Henry  
 Robert F. Higgins  
 Ms. Deb Hoffman  
 Ms. Martha Hultzman  
 Mr. Sean Hurley

Ms. Amy Iseppi  
 Mr. Michael Jeans  
 David and Lilian Keefe  
 Rev. Msgr. Francis H. Kelley  
 John and Corrinne Kelliher  
 Ms. Megan Kelly  
 Mr. Harrison Kenner  
 Senator and Mrs. Paul G. Kirk  
 The Seymour H. Knox Foundation  
 Mr. Thomas Laur  
 Mr. Arthur Lee  
 Anne and Kevin Liddy  
 Mr. Paul A. Lonergan  
 Mr. and Mrs. Chuck Longfield  
 Richard C. Lord  
 Ms. Lara Lyberg  
 George P. Mair, Esq.  
 Thomas and Regina Mannix  
 Mr. Joseph Marks  
 Mr. Rob McCormack  
 Richard P. McCoy  
 Paul McDonald & Marcia Velencia  
 Ms. Barbara McKenna  
 Mr. and Mrs. Joseph McSweeney  
 Million Dollar Round Table  
 Peter and Kelley Mongeau  
 Mr. John Piccione  
 Laurence and Maura Naughton  
 Mr. Vincent C. Nuccio  
 Rev. Paul B. O’Brien  
 Mr. and Mrs. Thomas L.P. O’Donnell  
 Mr. and Mrs. Frank O’Leary  
 Mary Grassa O’Neill and Thomas P. O’Neill  
 Our Lady’s Academy, Waltham  
 Ms. Jennifer Pearce  
 Mr. and Mrs. Colby Penzone  
 Peter and Kerry E. Pound  
 Ms. Victoria Prudden  
 Mr. and Mrs. Daniel Quinn  
 Mr. and Mrs. Gerard Richer

Mr. Brian Rogers  
 Natalie and Mike Sanders  
 Toby R. Serkin, Esq.  
 Ms. Katelyn Shea  
 Mr. Nicholas Sirianni  
 Mr. and Mrs. Lee Tesconi  
 Mr. Todd Trapp  
 Mr. Jason P. Traue  
 USA East Province of the Society of Jesus  
 Mr. Robert V. Walsh  
 Mr. Patrick G. Ward  
 Mr. Kevin Welch  
 Tobias and Kristin Welo  
 Mr. and Mrs. Jeff Wheeler



Mr. Robert F. Cherry  
 Judy and Jonathan Chiel  
 Mr. Gerald Cimmino  
 Mr. Fred Colberg  
 Mr. Christopher Coleman  
 Ms. Kristen M. Coleman  
 Ms. M. Katherine Concilio  
 Patricia and John Connolly  
 Mr. Francesco A. Conte  
 J Brian and Catrina Corey  
 Mr. Guy Corricelli  
 Mrs. and Mr. Meghan Costa  
 Mr. Alan B. Cotecchia  
 Mr. and Mrs. Stephen J. Coukos

Dr. John F. Dolan  
 Mrs. Margaret L. Donaher  
 Ms. Ann M. Donovan  
 Ms. Laura Doody  
 Michael J. Dow  
 Mr. Christopher DSouza  
 Mr. and Mrs. Philip J. Dubuque  
 Mr. Paul Duffey  
 Thais Dumay  
 Ms. Kate Duncan  
 Mr. Dan Dunn  
 Mr. Dennis Patrick Duquette  
 Mr. Timothy Dwyer  
 Mr. Joseph Dyer

Ms. Mary Friel-Soucy  
 Ms. Susan Fugliese  
 Mr. Matthew Furlong  
 Mr. Ivan Garcia  
 Mr. and Mrs. James E. Gately  
 Ms. and Mr. Tara E. Gately  
 Ms. Jennifer Gaudet  
 Mr. and Mrs. Gregory Gilbert  
 Mr. Paul Giragos  
 Mr. Joseph Gladyszak  
 Mr. Blake J. Godbout



Mr. and Mrs. Richard A. Goldman  
 Joseph N. and Regina E. Goodwin  
 Mr. J.J. Green  
 Mr. and Mrs. Richard Gribaudo  
 Mr. and Mrs. Robert Hannon  
 Mr. Edward Hardiman  
 Mr. and Mrs. Tom Harkins  
 Dr. Bette Ann Harris  
 Mr. and Mrs. James Harrison  
 Mr. David J. Hegarty  
 Mr. and Mrs. Thomas H. Henry  
 Jordan Hershman and Diana K. Lord  
 Mr. Roger Hobby  
 Dr. Charles Hogan  
 Holy Name Parish, West Roxbury

Ms. Kathy Horgan  
 Robert and Susan Home  
 Mr. Ben Horner  
 Mr. Colin Howley  
 Mr. Eion Howley  
 Ms. Rosemary Hughes  
 Mr. and Mrs. Barry N. Hurwitz  
 Marc and Vivian Iannotti  
 Ironworkers Union Local 7  
 Mr. Ralph Jaccodine  
 Ms. Laura Jacques  
 Ms. Mary Johanson  
 John F. Kennedy Library Foundation  
 Mr. Micah Jones  
 Ed and Tricia Joyce  
 Mr. and Mrs. Jeremy B. Kantrowitz  
 Rev. Timothy Kearney  
 Mr. David Kelleher  
 Mr. and Mrs. Christopher Kelley  
 Ms. Colleen Kelly  
 Mr. and Mrs. David J. Kelsen  
 Mr. Daniel C. Kenary  
 Ms. Colleen Kenney  
 Daniel K. Kingsbury and Caitriona Ni Dhuchon  
 Mr. and Mrs. Richard T. Kircher  
 Mr. Andrew Klajbor  
 Knights of Columbus Dedham Council  
 Cathy and Jeff Konover  
 Mr. and Mrs. John J. Kostigen  
 Mr. and Mrs. John F. Koza  
 Mr. Robert Krantz  
 Mr. Jeremy Kream  
 Ms. Slava Kruzement  
 Ms. Grace V. Kudla  
 Peter Kuechle  
 Steven Kuhn and Madonna Daffron  
 Ms. Hillary Laggis  
 Ms. Sue Lampert  
 Elizabeth Lange & Rob Andler  
 Anne and Robert Lerner

Mr. Daniel Lattanzi  
 Ms. Christine Lattin  
 Mr. and Mrs. John F.X. Lawler  
 Mr. and Mrs. Henry J. Lawlor  
 Dr. and Mrs. Aaron Lazare  
 Ms. Renee LeBlanc DeCesare  
 Mr. Anthony Leccese  
 Ms. Mary T. Lee  
 Ms. Kathleen Levesque  
 Mr. Stephen Lewis  
 Mr. James Littleton  
 Ms. Lindsay Lockwood  
 Marci and Franz Loeber  
 Attorney and Mrs. Herbert J. Lynch  
 Mr. Brian Maher  
 Ms. Colleen Mahoney  
 Mr. Paul F. Mahoney  
 Mr. Robert E. Mann  
 Mr. and Mrs. Edwin E. Manzano  
 Louis J. Marett  
 Prudence Markos



Ms. Amy McDonald  
 Robert E. McDonnell, Esq.  
 Ms. Kristin McEachern  
 David J. McGrath  
 Mr. David McGrath  
 Mr. James McGrath  
 Mr. and Mrs. Donald J. McInnis

**UP TO \$999**

Ms. Andrea Aaron-Burke  
 Mr. Josh Adler  
 Mr. Robert B. Aiello  
 Ms. Lynn S. Akin  
 AmazonSmile Foundation  
 Mr. John Anderson  
 Mr. and Mrs. Kurt D. Annen  
 Anonymous (22)  
 Mr. Walter H. Anthrop  
 Mr. and Mrs. Nelson Apjohn  
 Austin Preparatory School, Reading  
 Mr. William A. Baino  
 Erika Banwarth  
 Raymond and Barbara Beaulieu  
 Nancy K. Beaumont  
 Mr. Dan Beckman  
 Ms. Laura Bell  
 Mr. Michael Bencal  
 Ms. Victoria Bendetson  
 Ms. Breanna Benoit  
 Mr. and Mrs. James C. Benoit  
 Mr. Jonathan Bernstein  
 Mrs. Nancy J. Bigelow  
 Mr. and Mrs. Gerald G. Bilodeau

Rev. Marc Bishop  
 Mr. and Mrs. David C. Boch  
 Dr. Henry Borkowski  
 Mr. Albert Bouchie / Metro Boston Group -  
 Coldwell Banker Commercial  
 Ms. Jolyne F. Boyle  
 Mr. and Mrs. Jeremiah J. Bresnahan, Jr.  
 Ms. Kathleen Brewer  
 Mr. G. Gernon Brown, III  
 Mr. and Ms. Paul D. Brzezinski  
 Mr. and Mrs. William L. Burke  
 Mr. Andrew Buttarro  
 Ms. Catherine Byrne  
 Mr. Declan Byrne  
 Mr. and Ms. Kevin Calabro  
 Mr. and Mrs. Joseph E. Calapa  
 Mr. Sean Callaghan  
 Ms. Elizabeth Callanan  
 Mrs. Jacqueline A. Canali  
 Dr. John Carey  
 Mr. Gerald C. Carney  
 Mr. Christopher Carpenter  
 Ms. Patricia Casey  
 Mr. Bartolome R. Celli  
 Central Catholic High School  
 Ms. and Mr. Eleanor M. Chase

**“I believe my future is bright today because of the many resources I am fortunate to have. Many of the resources that help me discover who I am and perfect my talent and skills.”** – KEVIN E. '24

Mr. Charles Cownie  
 Mr. Zachary Creeden  
 Ms. Hyacinth Crichlow  
 Ms. Jane T. Crimlisk  
 Cristo Rey Boston High School, Dorchester  
 Mr. Dennis Cronin  
 Cultivate Cares Inc.  
 Mr. and Mrs. Michael Cunningham  
 Deacon Michael Curren  
 Mr. and Mrs. Kevin T. Daly  
 Dr. Joycelyn A. Datu  
 Mr. and Ms. William J. Deane  
 Teresa DeCrescenzo  
 Mr. David DeFillippo  
 Mr. John Deschenes  
 John W. Deveney, Jr.  
 Mr. Noel Dixon

Mr. Harry Ebbighausen  
 Mr. Adler Eliacin  
 Mr. Robert Eustis  
 Mr. Eunice S. Fallon  
 Ms. Ellen Fantozzi  
 Ms. Mary Farrell  
 Mr. Mark Feliz  
 Mr. and Mrs. Mark Fennell  
 Mr. Gale Fiarman  
 Douglas Finn  
 Ms. Melissa Fish-Crane  
 Ms. Kristen Flores  
 Mr. Ed Foley  
 Ms. Caitriona Fottrell  
 Mr. and Mrs. Arthur A. Francis  
 Mr. Jeffrey Francis  
 Kathleen Fraser

**“I believe my future is bright because I am fortunate enough to attend a school that is setting me up for success. The curriculum, teachers, and school community allow me to receive an education that will lead me to many accomplishments.”**

– CAROLYN S. '25

Mr. and Mrs. Christopher Martin  
 John Materazzo  
 Mr. Colin Matheny  
 Mr. John L. Matthews  
 Mr. and Mrs. Richard P. Mattione  
 Ms. Katherine McAuliffe  
 Mr. Richard F. McCarthy

Mr. Michael McNally  
 Mr. David McNaughton  
 Ms. Kathryn McNaughton  
 Ms. Dina Meagher  
 Francis and Jackie Meaney  
 Ms. Siobhan Mee  
 Mr. Charles Melville



Mr. and Mrs. Michael O'Neill  
 Ms. Nancy O'Neill  
 Ms. Anne O'Toole  
 Mr. and Mrs. John D. Parker  
 Ms. Ellen Patrikas  
 Mrs. Dianna Patterson  
 Mr. and Mrs. Robert D. Payne  
 Paypal Giving Fund  
 Mr. William Keith Penning  
 Ms. Joanne Penta  
 Ms. Ortega Pittman  
 Mr. and Mrs. William R. Pitts  
 Mr. Paul Price  
 Ms. Carol Prone  
 Mr. David Quade  
 Mr. Robert Quan  
 Mr. and Mrs. William J. Quigley  
 Ms. Brigid Quinn  
 Mr. John B. Quinn  
 Mrs. and Mr. Mary M. Radley  
 Paul B. Raymond

Ms. Paula Messina  
 Ms. Catherine Meuse  
 Mr. and Mrs. Stephen M. Miklus  
 Ms. Catherine Millane  
 Ms. Jacqueline Miller  
 Mr. John Mitchell  
 Mr. and Mrs. Alexander Morgan  
 Mr. Chester W. Morrill  
 Mr. and Mrs. Matthew Mugerini  
 Rev. John Mulloy  
 Mr. Michael L. Murphy  
 Mr. and Mrs. Robert F. Murphy  
 Ms. Stephanie Nearhos  
 France Neff  
 Mr. Joseph Ney, Jr.  
 Ms. Alison Nolan  
 Mrs. Elaine Noonan  
 Mr. and Mrs. Thomas Nunan  
 Mr. Handel Obas  
 Robert M. and Elizabeth V. O'Connell  
 Ms. Kelli O'Donohue  
 Mr. Ryan O'Keefe  
 Mr. Dave Olejnik  
 Ms. and Mr. Linda K. Olsen  
 Mr. Robert Olterman  
 Ms. Carolyn O'Neil

Ms. Bonnie Rodgers  
 Kristin Rogers  
 Mr. and Mrs. Nile G. Rogers  
 Mrs. Nancy Ryan  
 Catherine P. Sabaitis  
 Mr. Christopher Scarponi  
 Mr. and Mrs. Thomas A. Shields  
 Ms. Niamh Shuman  
 Mr. Luke N. Silvestri  
 Mr. Michael Simons  
 Mr. Uldis Sipols  
 Charles R. and Arlene A. Smith  
 Mr. and Mrs. Edwin E. Smith  
 Ms. Gina Smyth  
 Ms. Margaret Snook  
 Mr. and Ms. Mark Solakiar  
 Ms. Catherine Solomon  
 Charles L. and Dayle B. Solomont  
 Mr. Michael Splann  
 Mr. and Mrs. Francis X. Stanton  
 Ms. Margaret Stapleton

Lynda Sydney  
 Mr. Joseph F. Szymanski  
 Mr. Steven Terra  
 Mr. Jeff Terrey  
 Mr. Eric Teschemacher  
 Ms. Kattia Thomas  
 Ms. Mary Tibbetts  
 Mr. Charles A. Tiernan  
 Richard A. and Donna V. Toelke  
 Mr. Timothy J. Toomey  
 Mr. and Mrs. Joseph T. Tozzi  
 Mr. Gregory Tracy  
 Mark A. Tracy  
 James & Julie Tuite  
 Mr. Tim Tully  
 Mr. and Mrs. Michael H. Turpin  
 Mr. and Mrs. Carl Valenstein  
 Mr. Christopher Valente  
 Mr. Manuel Vaz  
 Ms. Maita M. Vert-crocker  
 Ms. Patricia Vieira  
 Ms. Rachel A. Voiland  
 Ms. Diann P. Walraven  
 Mr. Matthew Walsh  
 Mr. Matthew Walsh  
 Ms. Leslie Walstrom  
 Ms. Sara A. Wells  
 Mr. Dave White  
 Michael and Cheryle Young  
 Mr. Herbert G. Zeller  
 Mr. Zachary Zemlin  
 Ms. Caitlin Zeytoonian

---

**“I believe that my future is bright today because I am heading on a path with multiple opportunities and a healthy environment to help me and put me on the right path.”**

— DEYLIN R. '26

---

Mr. Dave Reardon  
 Mr. Jeffrey Reichlen  
 Mr. and Ms. Thomas J. Reilly  
 Mr. Michael Richman  
 Mr. Robert C. Rigolio  
 Rev. Edward M. Riley  
 Mr. Carlos Calderon and  
 Mrs. Maria-Maria Calderon  
 Mrs. Gina Rindfleisch

Owen and Molly Stearns  
 Kurt Steinkrauss, Esq.  
 Mr. R. Newcomb Stillwell  
 Mr. John F. Sullivan  
 Ms. Kelly Sullivan  
 Mr. Maurice H. Sullivan, III  
 Ms. and Mr. Pauline Sullivan  
 Mr. Sean Sullivan  
 Ms. Sheila Sullivan

---

*All gifts made from 7/1/2022 to 6/30/2023*



**CHANGING LIVES SPONSOR**

**\$150,000+**

- Anonymous
- Bank of America Charitable Foundation
- The Flatley Foundation
- Mr. and Mrs. John F. Fish; Suffolk Construction Company, Inc.
- The Kelly Family Foundation
- The Klarman Family Foundation
- Lynch Family and The Lynch Foundation
- The Moony Family
- Janet and Mike Rogers

**BUILDING MINDS SPONSOR**

**\$100,000-\$149,999**

- Anonymous
- Friends at Bain & The Bain Children's Charity
- Walter and June Downey
- Eastern Salt Company
- Mr. and Mrs. Paul B. Edgerley
- Emmanuel College
- Roger P. Joseph, Esq. and Patricia Palmer Joseph
- Gary and Diane R. Kaneb
- Robert and Dana Kraft
- Mrs. Annie Lynch Lukowski and Mr. Scott Lukowski
- Ms. Elizabeth Lynch de Montrichard and Mr. Gonzague de Montrichard
- Mr. and Mrs. James G. Miller
- Morgan Lewis and Friends
- Mr. and Mrs. William S. Mosakowski
- Ronald O'Hanley
- Putnam Investments and Friends
- Ms. Meg Reynolds and Mr. William McKee, Jr.
- Mr. and Mrs. Robert L. Reynolds
- Richard and Joanne Spillane
- Brendan and Kerry Swords

- Jim and Margaret Wade
- WCVB, Channel 5 Boston
- Dr. Mary Lynch Witkowski
- Yawkey Foundation

**VISIONARY SPONSOR**

**\$50,000-\$99,999**

- Anonymous
- Michelle and Bob Atchinson
- Brown Brothers Harriman & Co.
- Gabrielle & Richard J. Henken & The Schochet Companies
- The Holly and Bruce Johnstone Charitable Gift Fund
- Mary & Jim Judge
- Howard and Michele Kessler
- Mark, Becky, Samantha Levin
- Renee & Mike Minogue
- Paul and Sandra Montrone
- Mr. Brian Moynihan and Ms. Sue Berry
- Mr. & Mrs. Christopher C. Remondi
- Mrs. Barbara Roche
- Mr. and Mrs. Patrick E. Roche, Jr.
- State Street Corporation
- The TJX Companies, Inc.
- Joseph M. Tucci
- Mr. and Mrs. Robert D. Walter
- Joe and Cindy Wickwire

**PIONEER SPONSOR**

**\$25,000-\$49,999**

- Anonymous
- Arcturus Therapeutics
- BlackRock Financial Management, Inc.
- Geoff & Rene Boisi / Leadership Roundtable
- Mr. and Mrs. William J. Bolt
- Boston College

- Donald and Campbell Burton
- Cammarata Family Foundation
- The Cedar Street Foundation
- Mr. and Mrs. Miceal G. Chamberlain, Jr.
- Paul and Margaret Chisholm
- John and Stephanie Connaughton
- Richard and Ann Marie Connolly
- Mr. and Mrs. Jack M. Connors, Jr.
- Mr. Daniel diBartolomeo / Northfield Information Services
- DePrisco Diamond Jewelers & Co.'s, Inc.
- Jim and Bev Donovan
- Eastern Bank Charitable Foundation
- Lena G. and Ronald P. Goldberg, M.D
- Mr. and Mrs. James Green
- John W. Henry Family Foundation
- Brennan & Colin Howley
- Hunt Street Fund
- Mr. and Mrs. Gerald R. Jordan
- Kevin & Mary Ellen Kelley
- Liberty Mutual Insurance

- Ronald E. Logue and Kathleen M. McGillycuddy
- Marchon Partners
- Carl J. Martignetti
- Cathy Minehan & Jerry Corrigan
- Mr. and Mrs. John V. Murphy
- Ms. Kathleen Murphy
- Mr. and Mrs. Robert A. O'Neill
- Gillian and Stephen Petersen
- Mr. and Mrs. R. Robert Popeo, Esq.

- PricewaterhouseCoopers LLP
- The Reiser McStay Family Foundation
- Mr. and Mrs. John J. Remondi
- Mr. Eric Slifka
- The Sidney A. Swensrud Foundation Vertex
- White Winston Select Asset Funds

**SOCIAL IMPACT SPONSOR**

**\$10,000-\$24,999**

- The American Ireland Fund
- Anonymouse (2)
- Mr. and Mrs. Paul L. Antico
- Birmingham Foundation
- Norm and Helen Boucher
- Mr. and Mrs. John Brennan
- Dawn and Gary Burkhead
- David and Kathleen Calabro
- Ms. Tracy A. Campion and Mr. Bernard E. Greene, Jr.
- Katherine Chapman Stemberg and Bill Schnoor

- Ellyn Charters Zarracina and Matt Zarracina
- Jim Cleary & Jessica Hopfield
- Charles and Gloria Clough
- Margot C. Connell and Family
- Mr. Anthony Consigli
- Tom Corra and Dara Concagh
- Howard Cox
- Deloitte & Touche USA LLP and Friends
- Sarah and Walter Donovan



- John and Kathleen Drew
- T. J. and Shelia Fitzgerald
- Mr. and Mrs. Thomas J. Folliard
- Goldman Sachs and Friends
- Brian and Armanda Hanson
- Ted Hoff and Kathleen O'Connell
- The Hooley Family
- Barbara and Amos Hostetter
- Mr. and Mrs. Stephen Knightly
- Joe and Liz Marconi
- Mr. and Mrs. Mike Massaro
- Mr. and Mrs. Thomas J. May
- Tim McBride, Bessemer Trust
- George McCabe/Portolan Capital Management
- Mr. and Dr. Brendan McCarthy
- Mr. Michael McDonald
- Neal and Lynne Miller
- Heather & Robert Morrissey
- Kevin and KC O'Leary
- Ms. Karen O'Toole
- Mr. and Mrs. Stephen G. Pagliuca
- Mr. William Paine
- Prince Lobel Tye LLP
- Mr. and Mrs. John J. Regan
- Jack and Judi Remondi
- Saint Cecilia Parish, Boston
- Mr. and Mrs. Michael Sutphin

- Mr. Mason Tenaglia
- Mr. and Mrs. William J. Teuber
- Tom and Karen Tierney
- Mr. Nick Tiller
- Ted and Kathy Truscott
- Stephen G. Woodsum and Anne R. Lovett

**OPEN DOORS SPONSOR**

**\$5,000-\$9,999**

- Tchintcia and John Barros
- Boston Scientific Corporation
- Ms. Rachael Bradley
- Mr. Dennis Burns
- The Catholic Community Fund
- The Cleary Family Foundation
- Jim and Shirley Curvey
- R. J. Devereaux Corp.
- Greg & Katie Everett
- Beth and John Fantozzi
- Mr. and Mrs. James M. Harmon
- Sean and Carson Judge
- Nancy & Rick Kelleher & the Kelleher Family
- Mark Kerwin and Annemarie Lewis-Kerwin
- Christine & John Komola
- Rosemary and Jack MacKinnon
- Massachusetts Port Authority
- MA State Council Knights of Columbus
- Palisade Capital Management, L.L.C.
- Mr. David Phelan
- Peg and Mike Reardon
- Bob & Carol Riley
- The Barbara and Patrick Roche Center for Catholic Education-Boston College
- Mr. and Mrs. Michael Rossi
- Paul and Mary Beth Sandman
- Mr. and Mrs. Scott Savitz
- The William E. Simon Foundation
- Mr. Timothy Tully

**STUDENT INVESTOR SPONSOR**

**\$2,500-\$4,999**

- Mr. Christopher Allen
- Assumption University
- ATS Equipment
- Mr. Ryan Connolly
- FACTS Management Company
- Mr. and Mrs. James Griffin
- Corinne & Kyle Grimes
- James and Carolyn Holmes
- Kirkland & Ellis LLP
- Paul and Amy Kraft
- Catherine and Barry Nearhos
- Mr. and Mrs. Ramzi Nuwayhid
- Jack and Terry O'Connor
- Mr. Scott O'Reilly
- Parker Family
- Ms. Melissa Reilly
- Mr. and Mrs. Matthew Rogers
- South Boston Catholic Academy, South Boston
- Stonehill College
- Ms. Kristina Valente

**MENTORS**

**\$1,000-\$2,499**

- AAFCPAs
- Mr. and Mrs. Christopher R. Anderson
- Mr. Rob Ankner
- Anonymous (2)
- Mr. and Mrs. Andrew Blanchard
- Mr. Edward Bond, Jr.
- Michael and Melanie Cataldo
- Ms. Jaclyn Childs
- Mr. and Mrs. Albert T. Comeau
- Mr. and Mrs. John J. Cullinane, Jr.
- Robert Cunjak and Susan Dunn
- Mr. and Mrs. James S. DiStasio
- Mr. John J. Driscoll
- Daniel and Anne Dwyer
- Mr. Martin Fantozzi
- Mr. and Mrs. Joseph Flaherty

- Fontbonne Academy, Milton
- Richard B. Gold and Corrine M. Barrett
- Dr. Norman C. Gaudrault
- Ms. Deb Hoffman
- Ms. Martha Hultzman
- Mr. Sean Hurley
- Mr. Michael Jeans
- Mr. Richard P. Junghans
- David and Lilian Keefe
- Rev. Msgr. Francis H. Kelley
- John and Corrinne Kelliher
- Mr. Harrison Kenner
- Mr. Arthur Lee
- Mr. Paul A. Lonergan
- Thomas and Regina Mannix
- Maryanne Spillane McInturf
- Ms. Barbara McKenna
- Mr. and Mrs. Robert T. Noonan
- Rev. Paul B. O'Brien
- Mr. and Mrs. Frank O'Leary
- Ms. Jennifer Pearce
- Mr. and Mrs. Colby Penzone
- Ms. Victoria Prudden
- Mr. and Mrs. Daniel Quinn
- Mr. Michael Schelzi
- Mr. and Mrs. Pierre Sorel
- Dr. and Mrs. Ralph Sweetland
- USA East Province of the Society of Jesus

**FRIENDS**

**UP TO \$999**

- Anonymous (9)
- Austin Preparatory School, Reading
- Mr. Dan Beckman
- Ms. Laura Bell
- Ms. Victoria Bendetson
- Rev. Marc Bishop
- Ms. Kathleen Brewer
- Mr. Declan Byrne
- Ms. Elizabeth Callanan

Central Catholic High School  
 Mr. Fred Colberg  
 Mr. Christopher Coleman  
 Ms. M. Katherine Concilio  
 Ms. Hyacinth Crichlow  
 Cristo Rey Boston High School, Dorchester  
 Mr. John Deschenes  
 Ms. Laura Doody  
 Mr. Paul Duffey  
 Ms. Kate Duncan  
 Mr. Timothy Dwyer  
 Frederick E. Ehram  
 Ms. Ellen Fantozzi  
 Mr. Mark Feliz  
 Mr. and Mrs. Bill Fine  
 Mr. Ed Foley  
 Ms. Caitriona Fottrell  
 Mr. Jeffrey Francis  
 Ms. Susan Fugliese  
 Ms. Jennifer Gaudet  
 Mr. Edward Hardiman  
 Dr. Bette Ann Harris  
 Mr. Roger Hobby  
 Holy Name Parish, West Roxbury  
 Mr. Colin Howley  
 Ms. Rosemary Hughes  
 Marc and Vivian Iannotti  
 Ms. Amy Iseppi  
 Ms. Laura Jacques  
 John F. Kennedy Library Foundation  
 Mr. David Kelleher  
 Ms. Colleen Kelly  
 Daniel K. Kingsbury and Caitriona Ni Dhuchon  
 Mr. Robert Krantz  
 Mr. Daniel Lattanzi  
 Mr. and Mrs. John F.X. Lawler  
 Ms. Renee LeBlanc DeCesare  
 Mr. Brian Maher  
 Mr. Robert E. Mann  
 Mr. and Mrs. Christopher Martin

Ms. Kristin McEachern  
 David J. McGrath  
 Mr. David McGrath  
 Mr. James McGrath  
 Mr. and Mrs. Donald J. McInnis  
 Mr. Michael McNally  
 Ms. Dina Meagher  
 Rev. John Mulloy  
 France Neff  
 Ms. Alison Nolan  
 Ms. Kelli O'Donohue  
 Mr. Ryan O'Keefe  
 Mary Grassa O'Neill and Thomas P. O'Neill  
 Ms. Ellen Patrikas  
 Ms. Ortega Pittman  
 Mr. John B. Quinn  
 Mr. Jeffrey Reichlen  
 Mrs. Gina Rindfleisch  
 Kristin Rogers  
 Mr. and Mrs. Thomas A. Shields  
 Ms. Niamh Shuman  
 Mr. Michael Simons  
 Ms. Gina Smyth  
 Ms. Catherine Solomon  
 Mr. Michael Splann  
 Ms. Kelly Sullivan  
 Mr. Sean Sullivan  
 Mr. Eric Teschemacher  
 Mr. Tim Tully  
 Mr. and Mrs. Michael H. Turpin  
 Mr. Christopher Valente  
 Ms. Maita M. Vert-crocker  
 Mr. Matthew Walsh  
 Ms. Leslie Walstrom

*All gifts made from 7/1/2022 to 6/30/2023*

## SPECIAL GIFTS IN HONOR OF PETER LYNCH

### SUMMA CUM LAUDE LEGACY MEMBER

#### \$1M+

Anonymous  
 Mr. and Mrs. Robert T. Hale  
 Janet and Mike Rogers\*\*  
 Richard and Joanne Spillane\*\*

### MAGNA CUM LAUDE LEGACY MEMBER

#### 500K+

The Flatley Foundation  
 Janet & Ken Himmel and Grill 23\*\*  
 Mr. and Mrs. Stephen J. Lockwood\*\*  
 Mr. and Mrs. William S. Mosakowski

### CUM LAUDE LEGACY MEMBER

#### 100K+

Anonymous\*\*  
 Anonymous (2)  
 Bank of America Charitable Foundation  
 Mr. William Bower  
 Mr. and Mrs. Jack M. Connors, Jr.\*\*  
 Mr. and Mrs. William Andrew Danoff\*\*  
 Steve and Patti DuFour\*\*  
 Eastern Salt Company  
 Mr. and Mrs. Paul B. Edgerley  
 Emmanuel College  
 Mr. and Mrs. John F. Fish;  
 Suffolk Construction Company, Inc.\*\*  
 Mr. and Mrs. Bart A. Grenier\*\*  
 Ann and Graham Gund  
 Bruce and Patricia Herring\*\*  
 Highland Street Foundation  
 Brian and Mary Jo Hogan\*\*  
 Barbara and Amos Hostetter\*\*

Mr. Jeffrey Vinik  
 James and Margaret Wade  
 Dr. Mary Lynch Witkowski  
 Stephen G. Woodsum and Anne R. Lovett  
 Mr. Steve Wymer  
 Yawkey Foundation\*\*

The Howley Foundation  
 Hunt Street Fund\*\*  
 Roger P. Joseph, Esq. and Patricia Palmer Joseph  
 Gary and Diane R. Kaneb  
 The Kelly Family Foundation\*\*  
 The Klarman Family Foundation\*\*  
 Robert and Dana Kraft  
 Mr. Leonard Lauder  
 Mrs. Annie Lynch Lukowski and  
 Mr. Scott Lukowski

Ms. Elizabeth Lynch and  
 Mr. Gonzague de Montrichard  
 Lynch Family and The Lynch Foundation  
 Mr. and Mrs. Martin J. Mannion  
 J. Brian and Nancy McCarthy -  
 Kelly's Roast Beef Inc.\*\*  
 Mr. and Mrs. James G. Miller

Renee & Mike Minogue  
 The Mooney Family  
 Ronald O'Hanley  
 Mr. and Mrs. Stephen G. Pagliuca  
 Altum Fund / Mr. James N. Perry Jr. and  
 Mrs. Mary D. Perry  
 Mr. and Mrs. John J. Remondi\*\*  
 Ms. Margaret Reynolds and Mr. William McKee  
 Mr. and Mrs. Robert L. Reynolds  
 Mr. and Mrs. Patrick E. Roche, Jr.

The John J. and Mary E. Shaughnessy  
 Charitable Trust\*\*  
 Richard and Susan Smith Family Foundation -  
 Trustees: Richard and Susan Smith; John, Amy S.,  
 James and Elizabeth Berylson; Robert and Dana  
 Smith; Debra S., Jessica and Andrew Knez

Mr. Jeffrey Vinik  
 James and Margaret Wade  
 Dr. Mary Lynch Witkowski  
 Stephen G. Woodsum and Anne R. Lovett  
 Mr. Steve Wymer  
 Yawkey Foundation\*\*

### PLATINUM HONOR SOCIETY LEGACY MEMER

#### \$25K+

Mr. and Mrs. Thomas J. Allen  
 Anonymous (4)  
 Arcturus Therapeutics  
 Ashurst Foundation  
 Michelle and Bob Atchinson  
 Mr. and Mrs. Robert C. Bertelson\*\*  
 Geoff & Rene Boisi / Leadership Roundtable  
 The Boston Foundation / Lee Pelton  
 Donald and Campbell Burton  
 Cammarata Family Foundation  
 The Campaign for Catholic Schools  
 Mr. John H. Carlson  
 Cashin Family Fund  
 The Carney Family Charitable Foundation  
 The Cedar Street Foundation  
 Mr. and Mrs. Miceal G. Chamberlain, Jr.  
 Paul and Margaret Chisholm  
 Mr. Timothy Cohen\*\*  
 David and Victoria Croll  
 Robert Cunjak and Susan Dunn  
 DePrisco Diamond Jewelers & Co.'s, Inc.  
 Jim and Bev Donovan  
 Walter and June Downey  
 Mr. and Mrs. David Doyno  
 Greg & Katie Everett\*\*  
 Mr. Thomas Faust  
 Gerondelis Foundation, Inc.  
 Nancy and Craig Gibson  
 Lena G. and Ronald P. Goldberg, M.D  
 Gabrielle & Richard J. Henken &  
 The Schochet Companies  
 John W. Henry Family Foundation  
 Mr. and Mrs. Gerald R. Jordan  
 Nancy & Rick Kelleher & the Kelleher Family  
 Mr. and Mrs. Daniel E. Kelley  
 Kevin & Mary Ellen Kelley  
 Howard and Michele Kessler  
 Mark, Becky, Samantha Levin  
 Liberty Mutual Insurance  
 Ronald E. Logue and Kathleen M. McGillycuddy  
 Carl J. Martignetti

George McCabe/Portolan Capital Management  
 Mr. John McDowell  
 Mr. Gerard McGraw  
 Neal and Lynne Miller  
 Mr. Vince Montemaggiore  
 Paul and Sandra Montrone  
 Mr. and Mrs. John Morrissey\*\*  
 Mr. Brian Moynihan and Ms. Sue Berry  
 Mr. and Mrs. John V. Murphy  
 Ms. Kathleen Murphy  
 Mr. and Mrs. Lawrence Rakers  
 The Reiser McStay Family Foundation  
 Mr. & Mrs. Christopher C. Remondi  
 Mrs. Barbara A. Roche  
 Robertson Foundation  
 Roger and Kristin Servison  
 Eileen C. Shapiro and Ben E. Eaves  
 Mr. Jack M. Shields, Esq.  
 Mrs. Thea Stoneman  
 The Sidney A. Swensrud Foundation  
 The TJX Companies, Inc.  
 Kristine Trustey & Sean McGraw  
 Joseph M. Tucci  
 Mr. and Mrs. Jonathan M. Uhrig  
 Rose-Marie and Eijk van Otterloo  
 Patrick and Emily Venanzi  
 Vertex  
 Mr. and Mrs. Robert D. Walter  
 White Winston Select Asset Funds  
 Joe and Cindy Wickwire

### HONOR SOCIETY LEGACY MEMBER BELOW \$25K

Mr. Christopher Allen  
 The American Ireland Fund  
 Mr. and Mrs. Christopher R. Anderson  
 Anonymous (3)  
 Mr. and Mrs. Paul L. Antico  
 Mr. Timothy J. Barberich and Ms. Eileen P. Gebrian  
 Tchintcia and John Barros  
 Mr. Steve Barwikowski  
 Mr. and Mrs. Jeffrey Bilezikian  
 Birmingham Foundation  
 Ms. Rachael Bradley

Mr. and Mrs. John Brennan  
 Dawn and Gary Burkhead  
 Mr. Dennis Burns  
 Ms. Tracy A. Campion and  
 Mr. Bernard E. Greene, Jr.  
 Michael and Melanie Cataldo  
 Judy and Jonathan Chiel  
 Jaelyn Childs  
 The Cleary Family Foundation  
 Mr. and Mrs. Steve Conine  
 Tom Corra and Dara Concagh  
 Howard Cox  
 Jim and Shirley Curvey  
 Anthony and Christie de Nicola Foundation  
 Mr. and Mrs. Douglas A. Donahue, Jr.  
 Ms. Laura Doody  
 Ms. Kelley Doyle  
 John and Kathleen Drew  
 Mr. Dennis Patrick Duquette  
 Daniel and Anne Dwyer  
 William Ebsworth and Anandi Pratap  
 Mr. and Mrs. Michael Evanisko  
 Martin Fantozzi  
 Mr. Jeffrey S. Feingold  
 Mr. and Mrs. Bill Fine  
 Fish Family Foundation  
 T. J. and Shelia Fitzgerald  
 Mr. and Mrs. Joseph Flaherty  
 Mr. and Mrs. Thomas J. Folliard  
 Ms. Susan Fugliese  
 Gabelli Group Capital Partners  
 Mr. and Mrs. Brian J. Gallagher  
 Mr. Robert E. Griffin, Jr.  
 Corinne & Kyle Grimes  
 Brian and Armanda Hanson  
 Ted Hoff and Kathleen O'Connell  
 Ms. Pam Holding  
 Nicole and Thomas Hynes  
 Ms. Laura Jacques  
 Christine & John Komola  
 Paul and Amy Kraft  
 Daniel K. Kingsbury and Caitriona Ni Dhuchon  
 Mr. Thomas Laur  
 Mr. and Mrs. Chuck Longfield  
 Mr. Caleb Loring, III

Thomas and Regina Mannix  
 Mr. and Mrs. Mike Massaro  
 Mr. Michael McDonald  
 Barbara McKenna  
 Peter and Kelley Mongeau  
 Mr. and Mrs. Charles Morrison  
 Rev. John Mulloy  
 Mr. and Mrs. Thomas Nunan  
 Oberndorf Enterprises  
 Mr. and Mrs. Joseph O'Donnell  
 Old Neighborhood Foods  
 Kevin and KC O'Leary  
 Ms. Karen O'Toole  
 Mr. William Paine  
 Mr. and Mrs. Colby Penzone  
 Mr. David Phelan  
 Ms. Victoria Prudden  
 Mr. and Mrs. Daniel Quinn  
 Raskob Foundation for Catholic Activities, Inc.  
 Peg and Mike Reardon  
 Mr. and Mrs. John J. Regan  
 Ms. Melissa Reilly  
 Mr. and Mrs. Kennedy P. Richardson  
 Mr. and Mrs. Matthew Rogers  
 Mr. and Mrs. J. Michael Sanders  
 Natalie and Mike Sanders  
 Mr. and Mrs. Scott Savitz  
 Shah Family Foundation  
 The William E. Simon Foundation  
 Ms. Gina Smyth  
 Mr. and Mrs. Pierre Sorel  
 Mr. and Mrs. Thomas M. Sprague  
 Mr. and Mrs. Michael Sutphin  
 Dr. and Mrs. Ralph Sweetland  
 Brendan and Kerry Swords  
 Tom and Karen Tierney  
 Mr. Nick Tiller  
 Mr. Michael Tooke  
 Ted and Kathy Truscott  
 Mr. Timothy Tully  
 Tobias and Kristin Welo  
 Frank Wisneski and Lynn Dale

\*\* Multi Year Pledge

**ENDOWED FUND**

Anonymous (9)  
 Christa McAuliffe Scholarship Fund  
 General Endowment fund  
 The Alice E Cronin Scholarship Fund  
 The Bertucci Inner-City Scholarship Fund  
 The Birmingham Fund for Urban Recruitment  
 The Byrnes Scholarship Fund  
 The Catherine McDonnell Scholarship Fund  
 The Hearst Foundation Scholarship Fund  
 The Highland Street Counseling Fund  
 The Liberty Mutual Scholarship Fund  
 The Lynch Endowment for Marketing  
 The Lynch Endowment for Scholarships  
 The Lynch Endowment for Technology and Innovation  
 Sister Cecilia Leonor Navas, OP Scholarship Fund  
 The Patti & John Dirlam Scholarship Fund  
 The Roche Inner-City Scholarship Fund  
 The Rogers Family Fund  
 The Shames Inner-City Scholarship Fund  
 The Wade Scholarship Fund  
 William S. Mosakowski Endowment Fund

**SCHOLARSHIP ANGELS**

Ms. Megan Adzima  
 Anonymous (2)  
 Mr. Michael Bencal  
 Ms. Breanna Benoit  
 Mr. and Ms. Kevin Calabro  
 Andrea J. Corcoran  
 Deacon Michael Curren  
 Mrs. Elizabeth M. Dodge  
 Mr. Joseph Dyer  
 Douglas Finn  
 Ms. Susan Fugliese

Dr. Charles Hogan  
 Ms. Amy Iseppi  
 Mr. Ralph Jaccodine  
 Ms. Colleen Kenney  
 Steven Kuhn and Madonna Daffron  
 Ms. Hillary Laggis  
 Ms. Christine Lattin  
 Marci and Franz Loeber  
 Mr. Kevin Matthews  
 Noreen and Martin Millane  
 Mr. John Piccione  
 Ms. Stephanie Nearhos  
 Mr. Joseph Ney, Jr.  
 Mr. Vincent C. Nuccio  
 Ms. Carol Prone  
 Mr. Robert Quan  
 Peg and Mike Reardon  
 Mrs. Gina Rindfleisch  
 Mr. Christopher Scarponi  
 Mr. Luke N. Silvestri  
 Ms. Margaret Snook  
 Ted and Kathy Truscott

**TRIBUTE GIFTS**

**IN HONOR OF**

Suzanne Perry  
 Matthew Montoya-Figuero  
 William MacLean  
 Rick Spillane  
 Michael and Janet Rogers  
 Michael Volonnino and Rachel Rumley  
 Cardinal Spellman High School and staff  
 Roger Joseph and Patricia Palmer  
 Margaret Wade  
 Roger Joseph, Esq  
 Ryan and Kerry Connolly

**IN MEMORY OF**

Brother Arthur A. Loftus, F.S.C.H  
 Herbert J Carlson  
 Stephen M. Russo  
 Sr. Mary I Shea and Sr Geraldine R Shea, sisters of CSJ Boston  
 Ebenezer Garcia Caban  
 Bernice “Bebe” Rosenstein  
 Phillip Gasper Messina  
 Carolyn Lynch

**LIFETIME GIVING FY23**

**\$10 MILLION +**

Anonymous  
 Lynch Family and The Lynch Foundation

**\$5 MILLION +**

Anonymous  
 Claire and John Bertucci  
 JoAnn McGrath  
 The Mooney Family  
 The Flatley Foundation  
 Mrs. Eileen M. Ward

**\$2.5 MILLION +**

Anonymous  
 Birmingham Foundation  
 Highland Street Foundation  
 Mr. and Mrs. John A. McNeice, Jr.  
 Mr. and Mrs. William S. Mosakowski  
 Mrs. Eileen P. S. Roche  
 Janet and Mike Rogers  
 Richard and Joanne Spillane  
 Yawkey Foundation

**\$1 MILLION +**

Anonymous (6)  
 Bank of America Charitable Foundation  
 Better Opportunities Scholarship Foundation  
 Birmingham Foundation  
 Boston College  
 Cashin Family Fund  
 The Catholic Foundation  
 Margot C. Connell and Family  
 The John and Mary Corcoran Family Foundation  
 Dell EMC  
 Walter and June Downey  
 Thomas and Mariana Duncan  
 Mr. and Mrs. Paul B. Edgerley  
 In memory of Lois Egasti  
 Mr. and Mrs. John F. Fish; Suffolk Construction Company, Inc.  
 Mr. and Mrs. Robert T. Hale  
 Barbara and Amos Hostetter  
 Hunt Street Fund  
 Roger P. Joseph, Esq. and Patricia Palmer Joseph  
 The Kelly Family Foundation  
 Robert and Dana Kraft  
 Liberty Mutual Insurance  
 Loomis Sayles & Company, L.P. and Friends  
 Gillian and Stephen Petersen  
 Raytheon Company  
 Mr. and Mrs. John J. Remondi  
 Ms. Meg Reynolds and Mr. William McKee, Jr.  
 Brendan and Kerry Swords  
 The TJX Companies, Inc.  
 Charlotte and Herbert Wagner  
 Mr. and Mrs. Robert D. Walter  
 William Randolph Hearst Foundation

**BOARD OF TRUSTEES**

Seán Cardinal O’Malley  
*ArchBishop of Boston/Chairman*  
 Peter S. Lynch °  
*President Emeritus*  
 Michael F. Rogers  
*President*  
 James F. Mooney III  
*Senior Vice President*  
 Christine T. Komola  
*Vice President*  
 Christopher C. Remondi  
*Clerk*  
 Thomas J. Corra  
*Treasurer*

Tchintcia Barros  
 Paul J. Birmingham °  
 Fr. Marc Bishop  
 Miceal G. Chamberlain  
 Ellyn Charters Zarracina  
 Ryan Connolly

Noel Dixon  
 Kate Ferrara  
 Brian J. Gallagher  
 Roger P. Joseph  
 Sean Judge  
 Gary Kaneb  
 Shelagh E. Mahoney  
 Brendan McCarthy  
 Renee D. Minogue  
 Robert F. Morrissey  
 William S. Mosakowski  
 Kevin J. O’Leary  
 John J. Regan  
 John J. Remondi °  
 Margaret M. Reynolds  
 Michael Sutphin  
 Timothy M. Tully  
 Margaret Wade  
 Cindy Wickwire

**ADVISORY BOARD**

John G. Balboni  
 William Bower  
 Paul W. Chisholm  
 Todd C. Cozzens  
 Daniel diBartolomeo  
 David Foss  
 Scott A. Gieselman  
 Kevin Kelley  
 Ronald E. Logue  
 Ronald O’Hanley  
 Stephen R. Petersen  
 Patrick E. Roche

*°Lifetime Trustee*



# YOUR SUPPORT MATTERS

Your gift is an investment in the future, providing in-need students and their families with a high-quality, values-based Catholic education. Join us today and your tax-deductible gift will provide a scholarship to a student in need.

**Considering that 98% of our students go on to college,** transforming lives and building strong communities truly begins with you.

 <p>DONOR-ADVISED FUND (DAF)</p>	 <p>APPRECIATED STOCK</p>	 <p>CRYPTOCURRENCY</p>	 <p>SCHOLARSHIP ANGELS -SUSTAINING GIFTS</p>	 <p>PLANNED GIVING</p>
---	--	--	---	---



CHECK OUT ALL THE WAYS YOU CAN CHANGE A LIFE

You can make a gift online at [www.csfboston.org](http://www.csfboston.org) or mail a check to the **Catholic Schools Foundation** at 67 Battery March Street, 6th Floor, Boston, MA 02110.

For more information on ways to give, please contact **Gina Rindfleisch**, *Advancement Director*, at [gina@csfboston.org](mailto:gina@csfboston.org).



The Catholic Schools Foundation changes lives by providing families with demonstrated financial need an opportunity to give their sons and daughters a quality education, focused on Christian values and character formation at Catholic Schools located throughout the Archdiocese of Boston, regardless of race, religion, ethnicity or gender.



WE CHANGE LIVES.



67 BATTERYMARCH STREET, 6TH FLOOR, BOSTON, MA 02110  
(617) 778-5981 | [CSFBOSTON.ORG](http://CSFBOSTON.ORG)